

# Annual Report

## 2012



# HARBOR WILDWATCH



## Mission

To inspire stewardship of the Puget Sound by providing learning opportunities about the environment to the people of our local communities.

## Vision

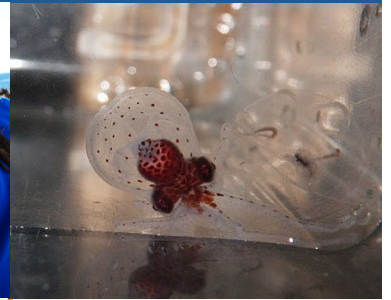
To be a catalyst for environmental education contributing significantly to our community's understanding of the environment in which we live and our impact on the Puget Sound.

## Motto

Learn. Have Fun.



Harbor WildWatch reached 24,609 people through 604 environmental workshops and events in 2012.



### Get Your Feet Wet

The *Get Your Feet Wet* experience is Harbor WildWatch's capstone program. Available to all ages, these fun and interactive programs are presented at public beaches and docks during summer low tide events. The *Get your Feet Wet* program features interpretive touch-tanks that showcase intertidal marine life collected by our Naturalists from the beach. With the help of our youth and adult volunteers, our experienced Naturalists are available to lead visitors on educational beach walks that teach them how to locate marine invertebrates while demonstrating proper beach etiquette.

Resources are available at each event to encourage participants to research species discovered during their visit and continue the learning process long after they leave the beach.

In 2012, Harbor WildWatch conducted 69 *Get Your Feet Wet* programs reaching 7,635 visitors.

### Harbor Outreach Program

The *Harbor Outreach Program* (HOP) is an important science resource that Harbor WildWatch provides to supplement the science education at local elementary and middle schools. The HOP curriculum consists of 19 classroom science workshops that explore biology, ecology, geology, physics, basic chemistry, energy transference and interdisciplinary environmental sciences through marine topics. These 40 minute to 1-hour workshops are designed to complement existing science curriculum by reinforcing classroom learning through hands-on techniques.

The ultimate goal of the HOP is to increase scientific literacy among our young students, generate excitement around science disciplines, empower students to apply their knowledge outside the classroom and become stewards of the Puget Sound.

This program expanded into 15 new schools in 2012, delivering 505 workshops to 12,498 students.

### seaStars & Beyond

The *seaStars & Beyond* program is designed for young nature enthusiasts, ages 8-12, who are interested in becoming stewards for the Puget Sound by studying various ecosystems and their connections to them. Recommended by their teachers, these students participate in workshops led by Harbor WildWatch Naturalists and local specialists. After completing their training, students are required to complete a self-designed community service project and fulfill a minimum number of volunteer service hours as youth interpreters at the *Get Your Feet Wet* beach programs.

All families were required to contribute a participation fee to help defray program costs. Financial support is available to those families in need.

In 2012, 25 youth and their parents took part in 17 junior naturalist training workshops. The curriculum was expanded to include new topics such as composting, green living techniques and carbon footprint analysis.

### Pier Into the Night

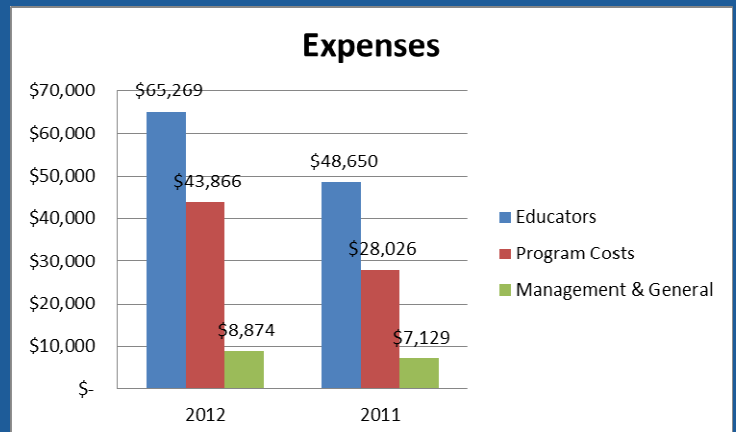
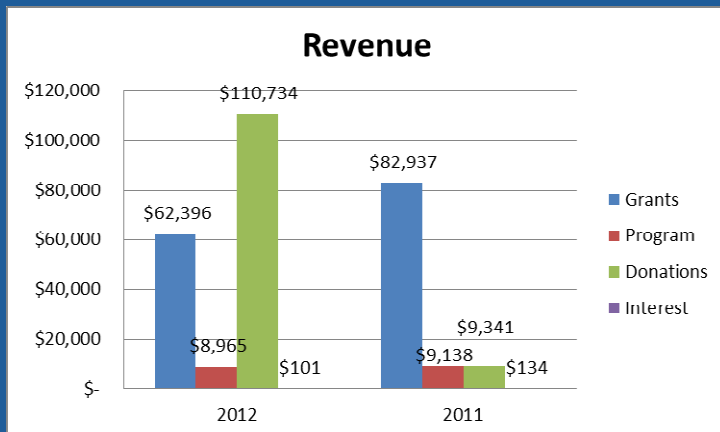
The *Pier Into the Night* is Harbor WildWatch's most unique program. Visitors have the opportunity to observe marine activity beneath Jerisich Dock from a night-time perspective. Guests have the opportunity to see ambushing squid, bioluminescent ctenophores, darting shrimp and rare butterflies of the sea as they flutter in the lights. Adults and children alike investigate the underside of the dock, viewing massive plumed worm colonies, sea stars on the hunt, and nudibranchs prowling the barnacle beds.

These popular events continue to allow Harbor WildWatch to reach new segments of the population that we do not normally encounter during our summer beach programs. We coordinate many of these activities with City of Gig Harbor events such as the Art of Chocolate Walk and Holiday Tree Lighting.

In 2012, we hosted 13 *Pier into the Night* programs with 4,451 visitors.

# Financials

The Board of Directors is dedicated to carrying out the mission and vision of Harbor WildWatch through careful management of the resources of the organization. In 2012, Harbor WildWatch had \$182,196 in total revenue and expended \$118,009. In addition, a total of 897.5 volunteer hours were contributed in 2012, amounting to \$13,463 donated through in-kind services. This is compared to 706 hours volunteered in 2011, amounting to \$10,590 donated. See the chart below for a breakdown of the organization's revenue and expenses.



## Generous Funders

The Russell Family Foundation  
 Washington State Department of Ecology  
 Greater Tacoma Community Foundation  
 KGI Watershed Council  
 The Baker Foundation  
 City of Gig Harbor  
 Melinda Gray Ardia Foundation  
 Peninsula School Education Foundation  
 Individual Donors

## Corporate Sponsors

First Citizens Bank  
 Harbor Place at Cottesmore  
 Real Carriage Doors  
 Send Out Cards—Bob Ingram  
 Urvina Insurance Agency  
 U.S. Bank—Gig Harbor Branch  
 Jaxe Salon & Spa



## Partners & Supporters

Alan Rammer  
 Center for Ocean Sciences Education Excellence  
 Citizens for a Healthy Bay  
 Downtown Waterfront Alliance  
 Friends of Pierce County  
 Foss Waterway Seaport  
 Gig Harbor Boat Shop  
 Gig Harbor Canoe & Kayak Racing Team  
 Gig Harbor Chamber of Commerce  
 Gig Harbor Farmer's Market Association  
 Gig Harbor Life

Harbor History Museum  
 I.E. Group  
 Java & Clay Café  
 Key Pen Parks  
 Kitsap County BeachWatchers  
 Ocean Inquiry Project  
 PNW Salmon Enhancement Group  
 Pen Met Parks  
 Peninsula Gateway  
 Peninsula School District  
 People for Puget Sound

Pierce Conservation District  
 Pierce County ECO Network  
 Pierce County Library—Gig Harbor  
 Pierce County Public Works & Utilities  
 Pierce County Stream Team  
 Pierce County Surface Water Management  
 Puyallup School District  
 Seattle Aquarium  
 Tacoma School District  
 Tom Taylor Family YMCA  
 Washington Sea Grant  
 Washington State Parks





## Board of Directors

President: Joyce Murray  
 Vice President: Jack Conway, PhD  
 Secretary: Mike Behrens, PhD  
 Treasurer: Ginny Christensen  
 Director: Barbara Tripp

Director: Jim Christensen  
 Director: Robin Kinerk  
 Director: Ted Smith  
 Director: Brett Marlo DeSantis  
 Director: Cheri Patch  
 Director: Howard Svigals

## Staff & Independent Contractors\*



Lindsey Johnson  
*Executive Director*



Rebecca Mullen\*  
*Program Director*



Rachel Easton\*  
*Lead Naturalist*



Megan Gaskell\*  
*Naturalist*



Jolene Brokenshire\*  
*Naturalist*



3110 Judson Street, PMB #99  
 Gig Harbor, WA 98335

[www.harborwildwatch.org](http://www.harborwildwatch.org)  
[info@harborwildwatch.org](mailto:info@harborwildwatch.org)  
 (253) 514-0187



Connect with us online today.